

Revision

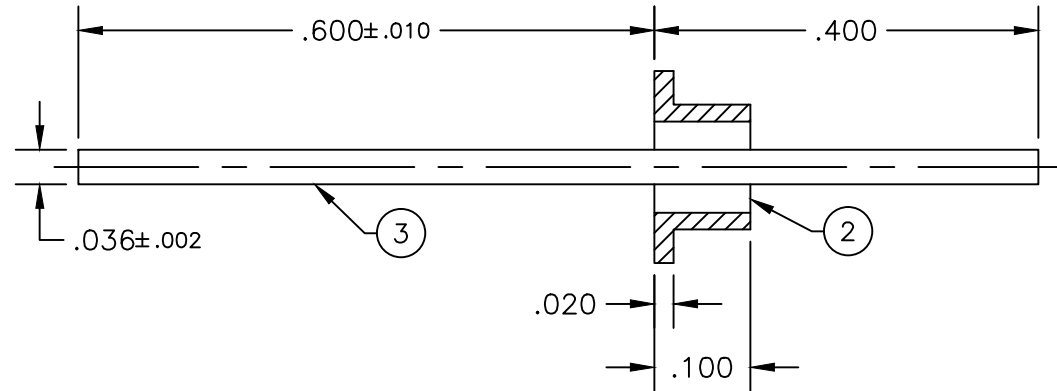
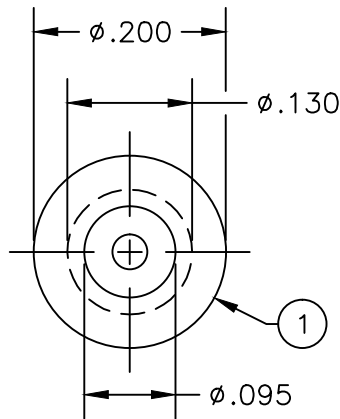
A 4940

New Title

Block

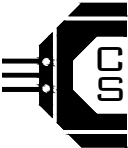
MLM 8/19/14

CSA-0-1-1-00035



NOTES:

1. Material:
 - 1.1. Eyelet - C1213-C1215 C.R.S.
 - 1.2. Electrode - #52 Alloy
 - 1.3. Glass - Corning 9013 or equivalent
2. Finish: 100-300 microinches matte Tin/Lead plating (lead content to be 3% minimum balance tin) over 100-300 microinches Sulfamate Nickel per QQ-N-290.
 - 2.1. Plating Area - 0.197 in²
3. Solderability of all metal parts to meet or exceed MIL-STD-202, Method 208.

	Aligning Plate	1PF	CSF-0-1-1-00007	SHEET 1 OF 1		 CENTURY SEALS Seaford, DE 19973 (302) 629-0324 www.centuryseals.com
	B/F Assembly	341AL	CSF-0-7-1-00061	UNLESS OTHERWISE SPECIFIED ALL DIMENSIONS ARE IN INCHES		
3	Electrode	1	CPC-3-1-1-00160	DECIMALS	ANGULAR	DO NOT SCALE DRAWING
2	Pellet	1	CSC-2-1-4-00100	.XX = ±.01	±5°	
1	Eyelet	1	CPC-1-2-1-00002	.XXX = ±.005		
#	DESCRIPTION	QTY	PART NUMBER	App'd/Date	CJ 6/22/11	
						TERMINAL ASSEMBLY
						P/N: CSA-0-1-1-00035
						CAGE CODE: 3BW86
						Rev. A

CSA-0-1-1-00010 REV. A