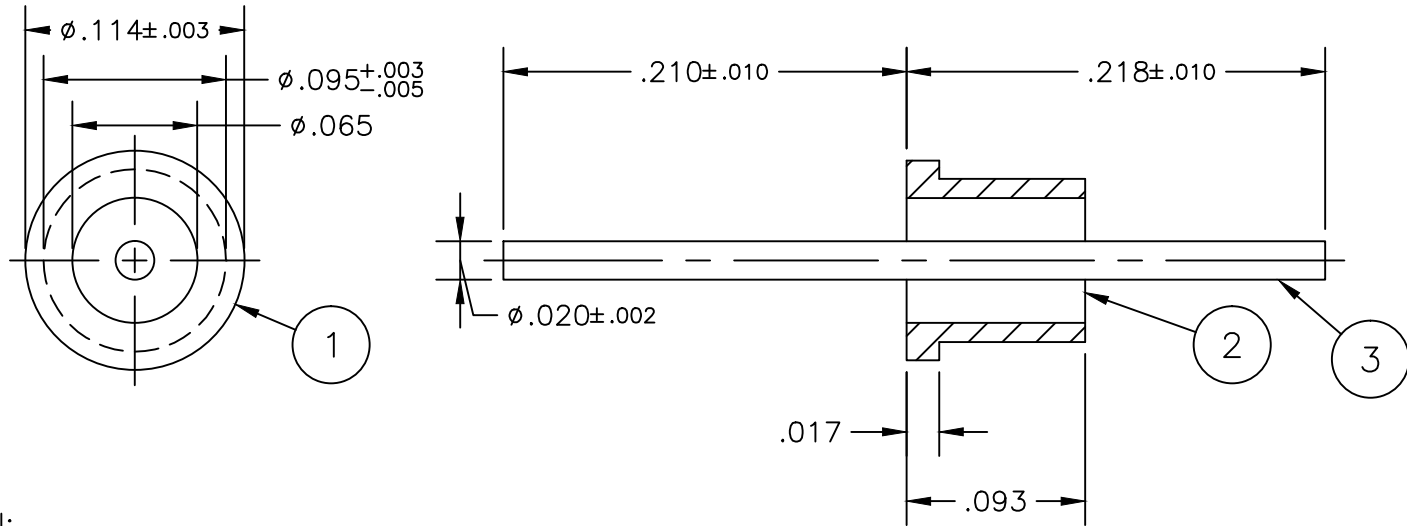


Revision

A 4940

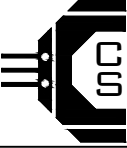
New Title
Block
MLM 8/19/14

CSA-0-1-1-00037



NOTES:

1. Material:
 - 1.1. Eyelet – C1213–C1215 C.R.S.
 - 1.2. Electrode – #52 Alloy
 - 1.3. Glass – Corning 9013 or equivalent
2. Finish: 200–300 microinches Silver plating in accordance with ASTM B700 Type 1, Grade A (matte), Class N over 200–300 microinches Copper plating in accordance with AMS 2418.
 - 2.1. Plating Area – 0.062 in²
3. Solderability of all metal parts to meet or exceed MIL–STD–202, Method 208.

	Aligning Plate	1PF	CSF-0-1-1-00010	SHEET 1 OF 1		 CENTURY SEALS Seaford, DE 19973 (302) 629-0324 www.centuryseals.com
	B/F Assembly	581AL	CSF-0-7-1-00063	UNLESS OTHERWISE SPECIFIED ALL DIMENSIONS ARE IN INCHES TOLERANCES		
	3 Electrode	1	CPC-3-1-1-00065	DECIMALS .XX = ±.01 .XXX = ±.005 .XXXX = ±.0005	ANGULAR ±5° DO NOT SCALE DRAWING	
	2 Pellet	1	CSC-2-1-4-00020	Drawn/Date	AB 6/20/11	TERMINAL ASSEMBLY P/N: CSA-0-1-1-00037 CAGE CODE: 3BW86
	1 Eyelet	1	CPC-1-2-1-00012	App'd/Date	CJ 6/22/11	
#	DESCRIPTION	QTY	PART NUMBER			Rev. A

CSA-0-1-1-00027 REV. ORIG.