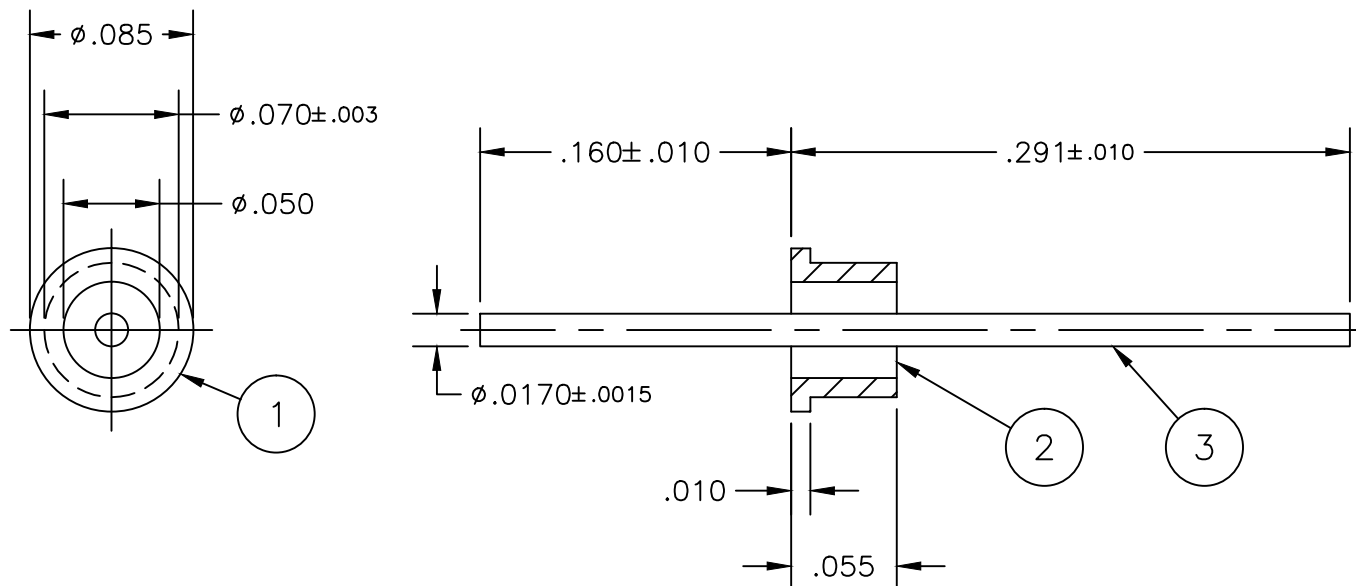


Revision

A 4940

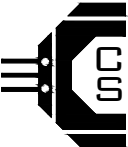
New Title
Block
MLM 8/19/14

CSA-0-1-1-00040



NOTES:

1. Material:
 - 1.1. Eyelet - C1213-C1215 C.R.S.
 - 1.2. Electrode - #52 Alloy
 - 1.3. Glass - Corning 9013 or equivalent
2. Finish: 100-300 microinches matte Tin/Lead plating (lead content to be 3% minimum balance tin) over 100-300 microinches Sulfamate Nickel per QQ-N-290.
 - 2.1. Plating thickness shall not increase eyelet diameter beyond .073 max.
 - 2.2. Plating Area - 0.042 in²
3. Solderability of all metal parts to meet or exceed MIL-STD-202, Method 208.

| | | | | | | |
|---|----------------|-------|-----------------|--|-------------|---|
| | Aligning Plate | 1PF | CSF-0-1-1-00001 | SHEET 1 OF 1 | |  CENTURY SEALS Seaford, DE 19973 (302) 629-0324 www.centuryseals.com |
| | B/F Assembly | 581AL | CSF-0-7-1-00001 | UNLESS OTHERWISE SPECIFIED ALL DIMENSIONS ARE IN INCHES TOLERANCES | | |
| 3 | Electrode | 1 | CPC-3-1-1-00001 | DECIMALS .XX = ±.01 .XXX = ±.005 .XXXX = ±.0005 | ANGULAR ±5° | TERMINAL ASSEMBLY P/N: CSA-0-1-1-00040 CAGE CODE: 3BW86 |
| 2 | Pellet | 1 | CSC-2-1-4-00001 | DO NOT SCALE DRAWING | | |
| 1 | Eyelet | 1 | CPC-1-2-1-00001 | Drawn/Date | AB 6/20/11 | Rev. A |
| # | DESCRIPTION | QTY | PART NUMBER | App'd/Date | CJ 6/22/11 | |